



Green Fab Technology

Technal Premium Partner

Aluminium System

DOOR | WINDOW | FACADE



Company Overview:-

Green Fab Technology is a premier company specializing in the manufacturing of high-quality Aluminium Doors, Windows, Façade systems, and facades. Located in Faridabad, Haryana, we are the leading manufacturer and supplier specializing in high-quality Aluminium Doors, Windows, and Façade systems.

We provide cutting-edge solutions tailored to meet the diverse needs of residential, commercial, and industrial clients. Our state-of-the-art manufacturing processes and meticulous attention to detail ensure that our products not only enhance aesthetic appeal but also offer superior durability, energy efficiency, and security.

Our commitment to excellence and innovation positions us as a trusted partner in the construction and architectural sectors.

Company History:

Green Fab Technology was established in January' 2020, emerged from a passion for sustainability and a commitment to excellence. Our founders recognized the urgent need of Aluminium DOOR Window Façade in the coming future and so as they adopt this business too.

Driven by this vision, they began their journey in a small workshop with eco-friendly, In the early years, parental business was in Wooden Furniture, in the year of 1997 they have moving towards Indian Aluminium profile following with the company known as AL Fab Glazing,

Over the years, we have expanded our portfolio with System Aluminium (TECHNAL from FRANCE) & UPVC (CORA from India) DOOR WINDOW FACAD to include a wide range of sustainable manufacturing solutions, catering to various category such as residential and commercial industries

As we look to the future, Green Fab Technology remains dedicated to fostering a culture of sustainability and innovation. We believe that by working closely with our clients and partners, we can drive meaningful change in the manufacturing industry with high quality Aluminium Door Window Façade System.

Mission Statement:-

At Green Fab Technology, our mission is to redefine the standards of quality in the aluminium fabrication industry. We strive to deliver exceptional products and services that enhance our clients' spaces while promoting sustainability and energy efficiency. We are dedicated to fostering long-term relationships with our customers through our unwavering commitment to quality, innovation, and customer satisfaction.



Green Fab Technology

Technal Premium Partner

Aluminium System

DOOR | WINDOW | FACADE



Hence to enhance the functionality and beauty of residential and commercial spaces through superior aluminium products. We strive to deliver exceptional value, combining cutting-edge technology with unparalleled craftsmanship to create solutions that stand the test of time.

By delivering the architectural beauty and functionality of spaces through premium aluminium products that are both environmentally friendly and durable. We strive to deliver exceptional service, fostering long-term relationships with our clients by understanding their unique needs and providing tailored solutions.

Vision

Our vision is to become the leading provider of aluminium doors, windows, and façade systems in India by continuously innovating and adapting to the latest technological advancements and customer preferences.

Why Choose Us?

- ✓ High-quality products made from durable materials.
- ✓ Advanced manufacturing processes.
- ✓ Customizable solutions to meet specific customer needs.
- ✓ Excellent customer service and support.
- ✓ Trendy sliding systems for commercial spaces.
- ✓ Energy-efficient Window Systems.
- ✓ Energy-efficient facades for retail buildings.
- ✓ Sustainable Facade Solutions.
- ✓ Sustainable home renovation with aluminium products.
- ✓ Modern commercial door solutions.
- ✓ Stylish aluminium windows for retail spaces.
- ✓ Green technology for home facades.
- ✓ High-quality sliding systems for commercial use.
- ✓ Durable aluminium doors for homes.
- ✓ Energy-saving windows for retail buildings.
- ✓ Eco-friendly Aluminium Door Window Sliding System.
- ✓ Green Building Technology.
- ✓ Innovative Aluminium Facade Designs.
- ✓ Environmentally Friendly Door Window Systems.
- ✓ Competitive pricing.



Green Fab Technology

Technal Premium Partner

Aluminium System

DOOR | WINDOW | FACADE



Clientele:-

Green Fab Technology serves a diverse range of clients, including:

- ✓ Residential building projects.
- ✓ Commercial property developers.
- ✓ Architects and interior designers.
- ✓ Individual homeowners.

Products and Services

- ✓ **Aluminium Doors**
- ✓ **Aluminium Windows**
- ✓ **Sliding Systems**
- ✓ **Aluminium Facades System**
 - ❖ **Structural Glazing System**
 - ❖ **Semi Unitize & Fully Unitize System**
 - ❖ **Curtain Wall Glazing Systems**
 - ❖ **Spider Glazing System**
- ✓ **Aluminium Internal Partition**
- ✓ **ACP & HPL Cladding**
- ✓ **Balcony Glass Railing System**
- ✓ **SKYLIGHT**
- ✓ **DOME SKYLIGHT**
- ✓ **Conservatory**
- ✓ **Glass House**
- ✓ **Glass Mattel Canopy**



Green Fab Technology

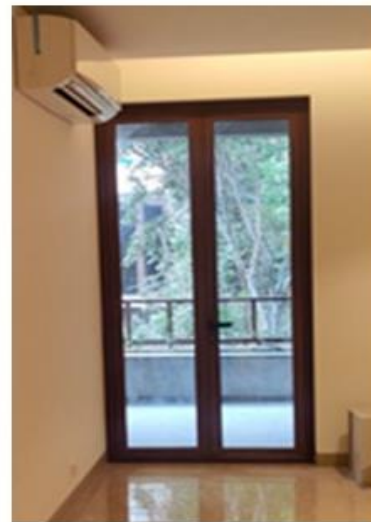
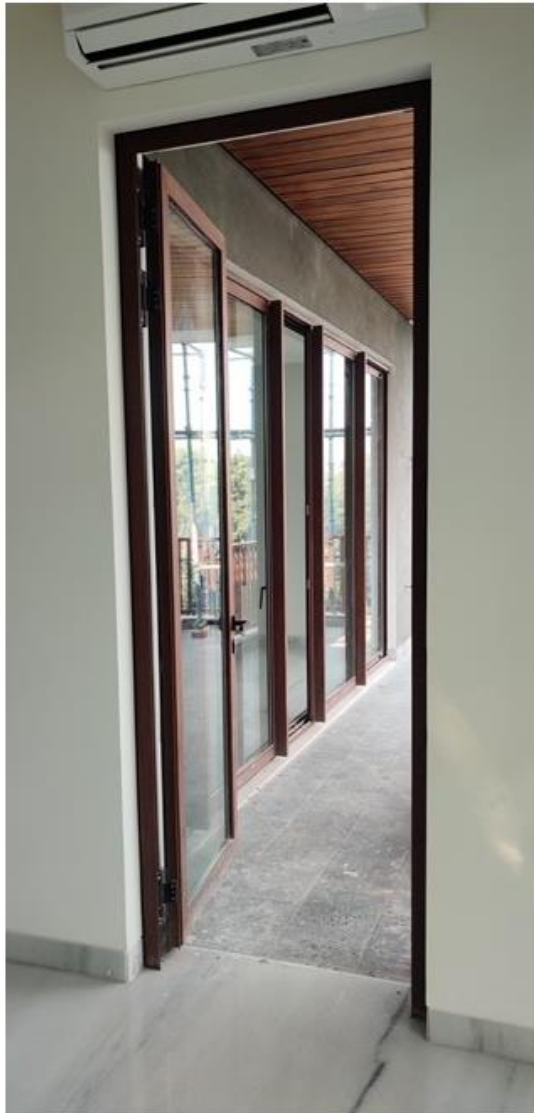
Technal Premium Partner

Aluminium System

DOOR | WINDOW | FACADE



Aluminium Doors: - Our aluminium doors are designed for security, style, and energy efficiency. Available in a variety of styles and finishes, carrying with wide range of designs, including hinged, bi-fold, and sliding doors, offering aesthetic flexibility and functionality.



They seamlessly integrate with any architectural design, providing durability and minimal maintenance, it combines strength, security, and style. From pivot and swing doors to bi-fold and multi-slide options, we offer versatile designs that suit any architectural aesthetic.



Green Fab Technology

Technal Premium Partner

Aluminium System

DOOR | WINDOW | FACADE



A comprehensive range of aluminium door systems designed for security, energy efficiency, and aesthetic appeal. Our doors are customizable, ensuring they fit seamlessly into any architectural style.

Aluminium Windows: - We provide a variety of aluminium window systems designed for energy efficiency and enhanced performance.

Our windows are customizable and available in different styles, colours, and finishes to complement any building, carrying with the product line includes casement, sliding, and fixed options, all customizable to meet client specificatio

We offer a variety of aluminium window solutions that provide excellent thermal performance and durability and noise reduction, natural light while ensuring energy efficiency.





Green Fab Technology

Technal Premium Partner

Aluminium System

DOOR | WINDOW | FACADE



Sliding Systems: - Innovative sliding mechanisms that ensure smooth operation and ease of use, suitable for both residential and commercial applications.



Slide N Fold System





Green Fab Technology

Technal Premium Partner

Aluminium System

DOOR | WINDOW | FACADE



Our systems are designed to maximise natural light while providing seamless indoor-outdoor transitions.

Aluminium Facade System: - We specialize in designing and installing modern aluminium facades that elevate the visual appeal of any structure.

Our facades not only serve as a protective layer but also contribute to energy efficiency and sustainability.

Tailored facade solutions that enhance the architectural aesthetics of buildings while providing weather resistance and durability.

Focused on energy efficiency and sustainability, our facades contribute to reduced energy consumption.



Structural glazing systems: - Structural glazing systems, in their simplest form, are types of curtain wall systems consisting of glass that is bonded or anchored back to a structure without the use of continuously gasketed aluminium pressure plates or caps. The glass can be comprised of monolithic, laminated, dual-glazed or even triple-glazed insulating glass units (IGUs). The back-up structure may



Green Fab Technology

Technal Premium Partner

Aluminium System

DOOR | WINDOW | FACADE



use horizontal and/or vertical aluminium mullions or be a glass mullion, steel blade, cable or stainless steel rod.

The interior and exterior may use extruded silicone/EPDM gaskets, or a wet sealed silicone depending on the system.

This system creates a completely clean, flush exterior appearance while the interior members have many different options depending on design and budget.

So why would you want to go with a structural glazing system?

Structurally glazed systems create a greater transparency than traditional captured systems. There are less visual interruptions due to the lack of metal on the exterior (and potentially the interior), creating a seamless, continuous glass look. Traditional captured curtain wall systems had pressure plates and caps that can conduct large amounts of heat in or out of the façade depending on the season. Since there is little to no exposed exterior metal, there is also less thermal bridging with structural glazing, saving on energy consumption costs. Now, let's take a look at some of the different types of structural glazing systems in the market today.

Unitized & Semi Unitized Glazing: - Unitized curtain systems are composed of large glass units that are created and glazed within a factory and then sent to the construction site. Since there is no on-site glazing, another major benefit of using a unitized system is the speed of installation

The unitised panels can use any combination of profiles, infill's, external feature caps and glazing to give building designers complete aesthetic flexibility

Advantages of Unitized Glazing

- I. Shorter programme times. Unitised solutions will help contractors and architects meet the increasing demand for shorter programme times, and can achieve impressive reductions in time on site of up to 70 per cent.
- II. Improved quality control. Because the façade panels are completed off site, and the external envelope is less affected by inclement weather, quality control is much easier with unitised façades, giving greater peace of mind for the contractor and developer.



Green Fab Technology

Technal Premium Partner

Aluminium System

DOOR | WINDOW | FACADE



Semi-unitized curtain wall glazing system is a type of structural glazing where the primary structural framing components are erected individually as an erector set. In this set, the vertical mullions are attached first to the floor slabs and the horizontals are attached to the vertical mullions to resemble a grid. The glass panel and the spandrel, which can be either glass or aluminium, are shop glazed and installed into the assembled grid work. The joineries and perimeter sealants are fields installed. The semi unitized systems largely anchored to the face of the slab as embedded plates or inserts.

Advantages of Semi-Unitized Glazing

- I. The vertical mullions in most semi-unitized glazing systems can span two floors with ease and as a result, provide greater structural efficiency.
- II. Most semi-unitized glazing systems have shop-assembled or off-site assembled frames. This reduces the time and cost.

Curtain Wall Glazing System: - A curtain wall is an exterior covering of a building in which the outer walls are non-structural, instead serving to protect the interior of the building from the elements. Because the curtain wall façade carries no structural load beyond its own dead load weight, it can be made of lightweight materials. The wall transfers lateral wind loads upon it to the main building structure through connections at floors or columns of the building.

Curtain walls may be designed as "systems" integrating frame, wall panel, and weatherproofing materials. Steel frames have largely given way to aluminium extrusions. Glass is typically used for infill because it can reduce construction costs, provide an architecturally pleasing look, and



Green Fab Technology

Technal Premium Partner

Aluminium System

DOOR | WINDOW | FACADE



allow natural light to penetrate deeper within the building. However, glass also makes the effects of light on visual comfort and solar heat gain in a building more difficult to control.

Other common infills include stone veneer, metal panels, louvres, and operable windows or vents.

Unlike storefront systems, curtain wall systems are designed to span multiple floors, taking into consideration building sway and movement and design requirements such as thermal expansion and contraction; seismic requirements; water diversion; and thermal efficiency for cost-effective heating, cooling, and interior lighting.

Here are some of the features and benefits of curtain walls:

- I. **Protection from the elements:** - Curtain walls protect the building from rain, snow, wind, and UV rays.
- II. **Thermal efficiency:** - Curtain walls can be designed to help with heating, cooling, and interior lighting.
- III. **Aesthetics:** - Curtain walls can be made from a variety of materials, including glass, aluminium, and thin stones, and can offer design flexibility.
- IV. **Transparency:** - Curtain walls can be see-through, allowing people to enjoy the view outside.
- V. **Lightweight:** - Curtain walls are thin and lightweight, so they can be made from lighter materials to reduce construction and maintenance costs.



Green Fab Technology

Technal Premium Partner

Aluminium System

DOOR | WINDOW | FACADE



Curtain walls are designed to span multiple floors, and must take into account building movement and sway, as well as seismic requirements and thermal expansion and contraction.

Curtain Wall Façade Glazing (D9, Defence Colony, New Delhi, 110024)





Green Fab Technology

Technal Premium Partner

Aluminium System

DOOR | WINDOW | FACADE



What is Spider Glazing: - Spider glazing is a type of glazing solution for exterior bolted glass assemblies. It uses point fixings to secure the glass to a support structure. Spider glazing is a complete packaged solution with glass, fixings, fasteners, and spider brackets connecting to the main structure.

Benefits & Applications of Spider Glazing Glass

The fixings used are made up of stainless steel. These fixings are designed to absorb all kinds of load and then distribute them to the support structure. It can handle static and dynamic loads, such as dead weight of the glass, wind loading, and differential expansion due to temperature alterations.

Top Benefits of Installing Spider Glazing

- I. **Flexibility:** - Spider glazing is a flexible medium. One can create various designs for canopies and frame-less entrances per the need and requirement. This glazing solution comes with a swarm of glass hardware fittings that can be customized according to the glass's condition and thickness.
- II. **Transparency:** - Spider glazing offers maximum transparency and ensures the entry of natural light into the building interiors. Therefore, spider-glazing curtain walls are widely used to provide daylight to commercial buildings. Being visually attractive, they are also used to create quality building skins. Since they are available in unique designs and allow brightness optimization, they are the number one choice for canopies, curtain walls, and atriums.
- III. **Easy Installation and Maintenance:** - Owing to their easy installation and maintenance, spider glazing systems are widely used in offices and building complexes. All uPVC doors and windows can easily be inserted in spider glass areas.
- IV. **Durability:** - Reputed glass manufacturers use high-quality materials like glass and stainless steel to make glass canopies and aluminium composite panel canopies, thus ensuring durable performance.
- V. **Weather and Rust-proofing:** - Since spider glazing is meant to be installed externally, there is always the factor of unstable and inclement weather conditions tampering with the structure's durability.



Green Fab Technology

Technal Premium Partner

Aluminium System

DOOR | WINDOW | FACADE



However, modern-day spider glazing is highly weather and water-proof. The stainless steel material used in construction prevents any ill effects of rusting.

Unobtrusive Appearance: - Another essential benefit of spider glazing is that it provides an unobtrusive appearance, and enhances the external look of the building due to its edgy architecture.



Top Applications of Glass with Spider Glazing

- I. **Exterior Glass Facades:** - Modern architecture has an evident edginess and a sense of futurism, and glass is the element that complements this attribute supremely well. In commercial buildings, exterior designs can use spider-glazing glass to create a sleek façade. When the sunlight hits the glass surface, it will be reflected in a rainbow of colors, offering a natural glimmer. As we all know, glass facades are a notch up for stylish and trendy exteriors. The occupants will also experience a good ambiance as the glass allows natural light to flood in.



Green Fab Technology

Technal Premium Partner

Aluminium System

DOOR | WINDOW | FACADE



- II. **Canopies:** - Canopies made of spider-glazing glass are superior on two fronts - style and strength. With these additions to architectural designs, you will get the functionality in an imaginative and stylish package. Glass canopies protect you from all weather conditions while seeking shelter. They are great additions to extend an interior space or assimilate an open section for space maximization. Best of all, it is the glass solution with which you can quickly achieve that refined modern sensibility.
- III. **Atriums:** - An atrium designed using spider glazing glass is the perfect solution to open up space in the interiors without compromising safety. An efficient option for improving lighting conditions, it can be customized to accommodate any structural setup. You can use it to allow copious amounts of natural daylight in your interiors and enjoy an expansive indoor ambiance. Moreover, it will be highly functional irrespective of the weather conditions, all year round. Atriums will help you add a modern twist to your structures.
- IV. **Curtain Walls:** - Spider glazing glass used in curtain walls will ensure maximum protection against air and water infiltration while providing robust support to the exterior structure. An exquisitely modern design option, glass curtain walls are most suited for encasing the exteriors of a structure. They will allow natural light to pass through while keeping the interiors airtight. Manufactured using lightweight material, glass curtain walls require minimal maintenance. Indeed, they are a modern masterpiece in structural design.
- V. **Frameless Entrances:** - Glass entrances that are not encased in a frame often provide a sense of extension. There is also a sense of continuity to frameless entryways. This helps in creating a false sense of enlargement. Using a glass entrance with spider glazing gives you a perfectly stylish but rugged structural design. These walls are easy to maintain as glass does not require intensive cleaning. Along with this, you get to enjoy a transparent and unobtrusive view. For modern architecture, it is a novel design.

We create spider glazing by utilizing glass spider fittings that provide it strength and make it more resilient than standard glass solutions. The stainless steel hardware for glass fittings does not rust. These solutions are water and weather-proof.

At Green Fab Technology customizable glass solutions are tailored to your specific needs. We offer specialized glass solutions in a variety of value-added products and services. You can rely on our expertise in inspection, product selection, design, installation, fitting, and after-sales service. We bring a highly versatile portfolio of glass solutions to meet your architectural requirements. All your décor needs can be arranged using our expert guidance. With superior-



Green Fab Technology

Technal Premium Partner

Aluminium System

DOOR | WINDOW | FACADE



quality glass products that are processed for extra strength and unmatched aesthetic appeal, we deliver on all quality parameters.

Aluminium Internal Partition: - Aluminium internal partitions are a versatile and cost-effective way to divide spaces and decorate walls in residential and commercial buildings:

Applications - Aluminium partitions are used in many applications, including offices, factories, manufacturing stations, hub centres, kitchens, balconies, ceilings, bathrooms, and shops.

Appearance - Aluminium partitions can be made to look like traditional steel-framed windows and doors.

Material - Aluminium partitions are made from rigid, corrosion-resistant aluminium profiles.

Uses - Aluminium partitions can be used to divide work areas, sales areas, and more. They can also be used to decorate walls, ceilings, bathrooms, kitchens, and balconies.

Installation - Aluminium partitions are lightweight and easy to handle and install, which can reduce construction time and labour costs.

Durability - Aluminium partitions are highly durable and resistant to wear and tear, making them ideal for high-traffic areas.

Cleaning - Cleaning frequency depends on accessibility and environmental severity.

Aluminium Internal Partition

WHITELAND, Head Office, Gurgaon,





Green Fab Technology

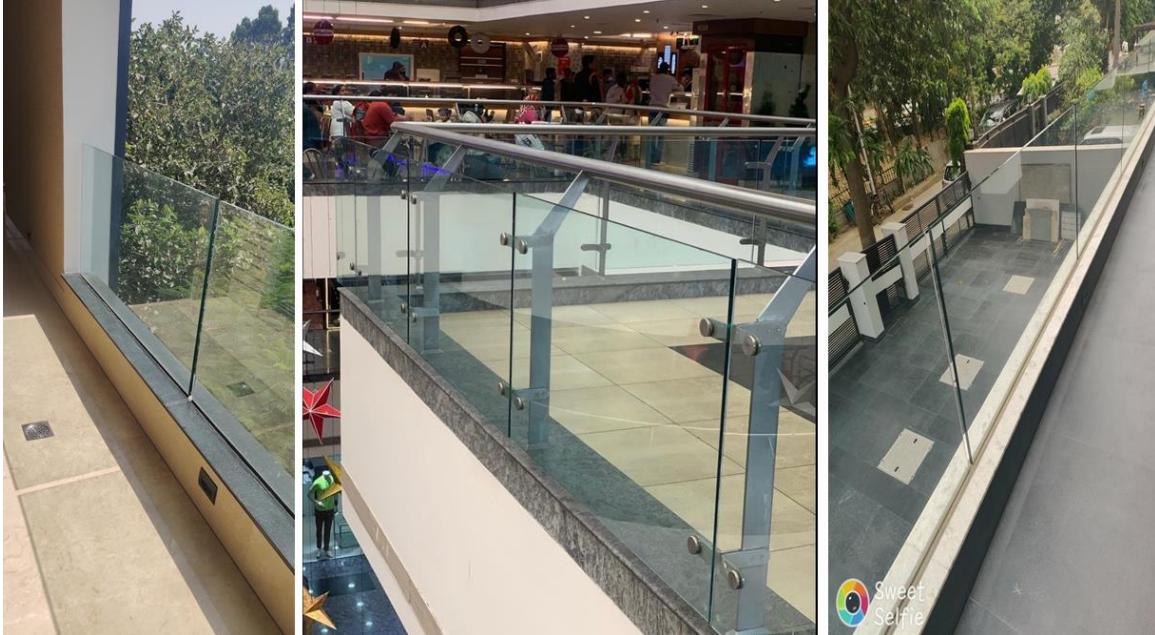
Technal Premium Partner

Aluminium System

DOOR | WINDOW | FACADE



Glass Railing



SKYLIGHT



H No. 9/2, Shed No. 2, Anangpur Chowk Anangpur Village,
Suraj Kund Badkhal Road, Near Omaxe Hills, Faridabad, Haryana 121003
Email: greenfabtechnology@gmail.com, Website: www.greenfabtechnology.com
Contact No: - 9899966670, 8700546847, 9899966605



Green Fab Technology

Technal Premium Partner

Aluminium System

DOOR | WINDOW | FACADE



Glass House





Green Fab Technology

Technal Premium Partner

Aluminium System

DOOR | WINDOW | FACADE



Core Values:-

Quality Assurance: - We prioritize quality at every stage of our production process to ensure our products not only meet but exceed industry standards and utilizing state-of-the-art technology and premium materials to ensure our products stand the test of time.

We adhere to stringent quality control processes to ensure that every product we deliver meets our high standards for performance and durability.

We are committed to maintaining the highest standards of quality in all our products. Our quality assurance team conducts rigorous checks at every stage of the production process to ensure that each product meets our stringent quality criteria. We use state-of-the-art technology and materials to manufacture reliable and long-lasting aluminium products.

Sustainability: - At Green Fab Technology, we understand the importance of sustainability. We strive to minimize our environmental impact by using recyclable materials and eco-friendly manufacturing processes. Our products are designed to be energy-efficient, thereby helping our clients reduce their carbon footprint

Innovation: - Our dedicated team of engineers and designers continuously explore new technologies and materials to create cutting-edge solutions.

Customer-Centric Approach: - We believe in building strong relationships with our clients. We work closely with architects, builders, and homeowners to provide personalized solutions and exceptional service, believe in building long-term relationships with our clients by providing exceptional service and tailored solutions to meet their specific needs.

Expertise: - With years of industry experience, our team possesses the knowledge and skills necessary to guide clients through the selection and installation processes.

Customization: - We offer tailored solutions to meet specific design requirements, ensuring that every product aligns with our client's vision.

After-Sales Support: - Our commitment to customer satisfaction extends beyond the sale, providing ongoing support and maintenance services to ensure the longevity of our products.

Expert Team: - Our team of experienced professionals is dedicated to delivering exceptional service, from the initial consultation and design phase to installation and after-sales support.

Custom Solutions: - We understand that every project is unique, which is why we offer customizable solutions tailored to meet the specific requirements of our clients.



Green Fab Technology

Technal Premium Partner

Aluminium System

DOOR | WINDOW | FACADE



Innovative Design: - Our team of experienced designers and engineers is dedicated to creating modern, stylish, and functional solutions tailored to the specific needs of our clients.

Integrity: - We conduct our business with transparency and honesty, building trust with our clients and partners.

Our Commitment: - Green Fab Technology is dedicated to providing top-notch products backed by exceptional customer service. Our skilled team of professionals works closely with clients to understand their specific requirements, ensuring that every project is executed with precision and care. We pride ourselves on our ability to deliver timely solutions that meet the unique demands of each project, regardless of size or complexity.

Conclusion: - Green Fab Technology is dedicated to providing superior aluminium solutions that enhance the quality and aesthetic of your spaces. With a focus on innovation, sustainability, and client satisfaction, we are the ideal partner for your next project. Experience the difference with Green Fab Technology—where quality meets elegance.

We believe in the power of aluminium to transform spaces. Our dedication to quality, sustainability, and client satisfaction positions us as a trusted partner in your architectural endeavours. Join us in creating innovative and sustainable environments that inspire and endure.

At Green Fab Technology, we understand that every project is unique. Our experienced team works closely with architects, builders, and homeowners to ensure that our products meet specific design requirements and functional needs. We take pride in our attention to detail and our ability to deliver projects on time and within budget.



Green Fab Technology

Technal Premium Partner


Aluminium System


DOOR | WINDOW | FACADE




Client Details

List of project details from the last 3 Years ON GOING & COMPLETD

S No	Project Name	WHITELAND, Gurugram	
1	System Application	TECHNAL Aluminium System from FRANCE DOOR WINDOW FACADE	
	Project Type	ASPEN ICINIC Tower (42 Floor)	
	Site Address: -	Sector 76, Gurugram, Haryana	
	Project Area (sqft)	77000	
	Order Value: -	7,70,00000.00	
	Year	2024	
	Project Status	ON GOING	

S No	Project Name	WHITELAND, Gurugram	
2	System Application	Indian Aluminium System	
	Project Type	Toggle Glazing System	
	Site Address: -	Sales Gallery Sector 103, Gurugram, Haryana	
	Project Area (sqft)	18000	
	Order Value: -	1,31,00,000.00	
	Year	2024	
	Project Status	ON GOING	

S No	Project Name	MG Housing, Faridabad	
3	System Application	CORA uPVC System	
	Project Type	Housing Society Tower (8 Floor) DOOR WINDOWS	
	Site Address: -	Sector 70, Faridabad, Haryana	
	Project Area (sqft)	16000	
	Order Value: -	66,00,000.00	
	Year	2024	
	Project Status	ON GOING	



Green Fab Technology

Technal Premium Partner

Aluminium System

DOOR | WINDOW | FACADE



S No	Project Name	WHITELAND, Gurugram	
4	System Application	Indian Aluminium System	
	Project Type	Zig Zag façade System	
	Site Address: -	Urban Qubes, Sector 71, Gurugram, Haryana	
	Project Area (sqft)	2000	
	Order Value: -	20,00,000.00	
	Year	2024	
	Project Status	ON GOING	

S No	Project Name	Billionaire Home	
5	System Application	Indian Aluminium System High & Premium Segment	
	Project Type	Residential Society	
	Site Address: -	2 nd Arjun Marg, DLF Phase 1, Gurugram, Haryana	
	Project Area (sqft)	5000	
	Order Value: -	44,25,000.00	
	Year	2024	
	Project Status	ON GOING	

S No	Project Name	Billionaire Home	
6	System Application	Indian Aluminium System	
	Project Type	Sales Gallery Curtain Wall System	
	Site Address: -	Gwal Pahari, Gurugram, Haryana	
	Project Area (sqft)	1200	
	Order Value: -	15,00,000.00	
	Year	2024	
	Project Status	ON GOING	



Green Fab Technology


Technal Premium Partner


Aluminium System

DOOR | WINDOW | FACADE



S No	Project Name	Individual	Individual
7	System Application	Indian Aluminium System	
	Project Type	Residential DOOR WINDOWS	
	Site Address: -	Nizamuddin, New Delhi	
	Project Area (sqft)	1800	
	Order Value: -	16,99,000.00	
	Year	2024	
	Project Status	ON GOING	

S No	Project Name	WHITELAND, Gurugram	
8	System Application	MS Structure, ACP Sheet	
	Project Type	Project Entry Gate	
	Site Address: -	Sector 76, Gurugram, Haryana	
	Project Area (sqft)	2000	
	Order Value: -	12,00,000.00	
	Year	2023	
	Project Status	COMPLETED	

S No	Project Name	JAYPEE GREENS, Noida	
9	System Application	Indian Aluminium (V SCOPE)	
	Project Type	Housing DOOR WINDOWS (for 30 Floor)	
	Site Address: -	134 WISH TOWN KBA 8, Noida, UP	
	Project Area (sqft)	45000	
	Order Value: -	2,89,39,500.00	
	Year	2023	
	Project Status	ON GOING	




Green Fab Technology


Technal Premium Partner

Aluminium System

DOOR | WINDOW | FACADE



S No	Project Name	JAYPEE GREENS, Noida	
10	System Application	Indian Aluminium (V SCOPE)	
	Project Type	Housing DOOR WINDOWS (for 22 Floor)	
	Site Address: -	134 WISH TOWN COSMOS 71 & 72, Noida, UP	
	Project Area (sqft)	32000	
	Order Value: -	2,05,79,200.00	
	Year	2023	
	Project Status	ON GOING	

S No	Project Name	CAPITAL, GURUGRAM	
11	System Application	CORA uPVC System	
	Project Type	Housing DOOR WINDOWS	
	Site Address: -	Sector 70, Gurugram, Haryana	
	Project Area (sqft)	7000	
	Order Value: -	28,00,000.00	
	Year	2023 comp	
	Project Status	COMPLETED	

S No	Project Name	Individual	<p style="text-align: center; font-size: 24px;">Individual</p>
12	System Application	Indian Aluminium System	
	Project Type	Curtain Wall Glazing System	
	Site Address: -	D9, Defence Colony, New Delhi	
	Project Area (sqft)	2000	
	Order Value: -	18,45,000.00	
	Year	2023	
	Project Status	COMPLETED	




Green Fab Technology


Technal Premium Partner


Aluminium System

DOOR | WINDOW | FACADE



S No	Project Name	WHITELAND, Gurugram	
13	System Application	Indian Aluminium System	
	Project Type	Sales Gallery Structure Glazing Façade, ACP, SKYLIGHT, Louvers	
	Site Address: -	Sector 76, Gurugram, Haryana	
	Project Area (sqft)	17000	
	Order Value: -	1,10,00,000.00	
	Year	2022 comp	
	Project Status	COMPLETED	

S No	Project Name	WHITELAND, Gurugram	
14	System Application	CLOSMA Internal Partions	
	Project Type	Internal Office Cabin,	
	Site Address: -	Whiteland Head Office, Sector 65, Worldmart, Gurugram, Haryana	
	Project Area (sqft)	2000	
	Order Value: -	30,00,000.00	
	Year	2022 comp	
	Project Status	COMPLETED	

S No	Project Name	JAYPEE GREENS, Noida	
15	System Application	Indian Aluminium (V SCOPE)	
	Project Type	Housing DOOR WINDOWS (for 22 Floor)	
	Site Address: -	134 WISH TOWN KPA 14	
	Project Area (sqft)	32000	
	Order Value: -	2,05,79,200.00	
	Year	2022 comp	
	Project Status	COMPLETED	



Green Fab Technology

Technal Premium Partner

Aluminium System

DOOR | WINDOW | FACADE



S No	Project Name	TRUESEED, GURUGRAM	
16	System Application	Indian Aluminium System	
	Project Type	Residential DOOR WINDOWS & FAÇADE	
	Site Address: -	South City 1 Gurugram, Haryana	
	Project Area (sqft)	13000	
	Order Value: -	1,00,000,00.00	
	Year	2022	
	Project Status	COMPLETED	

S No	Project Name	Individual	Individual
17	System Application	Indian Aluminium System	
	Project Type	Residential DOOR WINDOWS	
	Site Address: -	N 28, GK 1, New Delhi	
	Project Area (sqft)	1800	
	Order Value: -	16,99,000.00	
	Year	2022	
	Project Status	COMPLETED	

S No	Project Name	Individual	Individual
18	System Application	Indian Aluminium System	
	Project Type	Residential DOOR WINDOWS	
	Site Address: -	N 49, GK 1, New Delhi	
	Project Area (sqft)	3200	
	Order Value: -	30,20,800.00	
	Year	2022	
	Project Status	COMPLETED	



Green Fab Technology

Technal Premium Partner

Aluminium System

DOOR | WINDOW | FACADE



S No	Project Name	Individual	
19	System Application	Indian Aluminium System	Individual
	Project Type	Residential DOOR WINDOWS & Glass Railing	
	Site Address: -	B 24, Suncity, Gurugram, Haryana	
	Project Area (sqft)	6000	
	Order Value: -	60,00,000.00	
	Year	2022 comp	
	Project Status	COMPLETED	

S No	Project Name	Individual	
20	System Application	Indian Aluminium System	Individual
	Project Type	CONSERVATORY GLASS HOUSE	
	Site Address: -	Vasant Vihar, New Delhi	
	Project Area (sqft)	800	
	Order Value: -	45,00,000.00	
	Year	2021 comp	
	Project Status	COMPLETED	

S No	Project Name	Individual	
21	System Application	Indian Aluminium System	Individual
	Project Type	CONSERVATORY GLASS HOUSE	
	Site Address: -	Vasant Kunj, New Delhi	
	Project Area (sqft)	600	
	Order Value: -	32,00,000.00	
	Year	2021 comp	
	Project Status	COMPLETED	



Green Fab Technology

Technal Premium Partner

Aluminium System

DOOR | WINDOW | FACADE





Green Fab Technology

Technal Premium Partner

Aluminium System

DOOR | WINDOW | FACADE



Mercedes-Benz



BILLIONAIRE

H O M E S



Green Fab Technology
Technal Premium Partner
Aluminium System
DOOR | WINDOW | FACADE



Thanking You
Green Fab Technology